



# New Products

## MARCH 2024

EuroElone®

We are continually expanding our portfolio to meet your research needs. *Check out* the new products released this month!

## HOT PRODUCTS

### CUT&Tag Assay Kit #77552

#### Recommended Method for Protein-DNA Interaction Analysis

Cleavage Under Targets and Tagmentation (CUT&Tag) is a powerful technique used for probing protein-DNA interactions within the natural chromatin context of the cell. CUT&Tag has many of the same advantages as the CUT&RUN assay in that it provides a rapid, robust, and true low cell number protocol for detection of protein-DNA interactions in the cell. In addition, the CUT&Tag assay adds an in situ adaptor DNA ligation step carried out by the pAG-Tn5 enzyme, in which an adaptor DNA is ligated directly to antibody-targeted chromatin DNA fragments in the cell. As a result, subsequent DNA library preparation is much faster and easier than library preparation following the CUT&RUN assay, free from DNA end repair, A-tailing, and adaptor ligation in vitro.

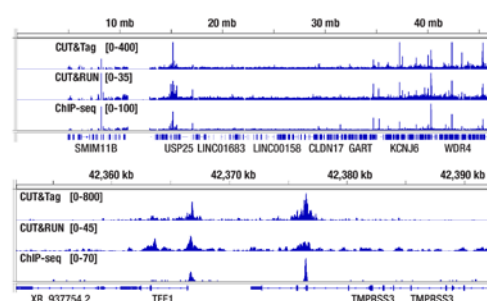
**KEYWORDS:** epigenetics, protein-DNA interaction analysis, NGS

### FAP (F1A4G) Rabbit mAb #52818

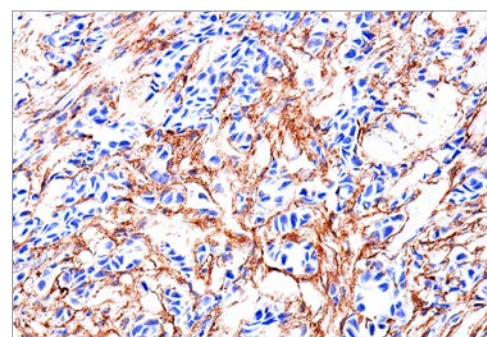
#### Important Protease Involved in Cancer and Fibrosis

Fibroblast activation protein/seprase (FAP) is a cell surface serine integral membrane protease with roles in tissue remodeling during development and wound healing, as well as in cancer and fibrotic disease. FAP has both dipeptidyl peptidase and endopeptidase activities, and cleaves at N-terminal Xaa-Pro sequences. FAP is highly expressed in tumor stroma, and contributes to migration and invasion of tumor cells, as well as that of endothelial cells, into the extracellular matrix. FAP is a useful marker of tumorigenic stroma and of cancer-associated fibroblasts (CAFs) and fibrosis.

**KEYWORDS:** Cancer, Fibrosis

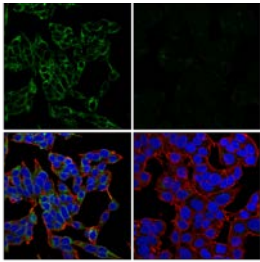


**C&T:** CUT&Tag, CUT&RUN, and ChIP-seq assays were performed with MCF7 cells grown in phenol red free medium and 5% charcoal stripped FBS for 4 d, then treated with  $\beta$ -estradiol (10 nM) for 45 min and Estrogen Receptor  $\alpha$  (D8H8) Rabbit mAb #8644, using #77552, the CUT&RUN Assay Kit #86652, or the SimpleChIP® Plus Enzymatic Chromatin IP Kit (Magnetic Beads) #9005. DNA libraries were prepared using CUT&Tag Dual Index Primers and PCR Master Mix for Illumina Systems #47415 for CUT&Tag samples and DNA Library Prep Kit for Illumina Systems (ChIP-seq, CUT&RUN) #56795 for ChIP-seq and CUT&RUN samples. The upper panel compares enrichment of Estrogen Receptor  $\alpha$  across chromosome 21, while the lower panel compares enrichment around TFF1, a known target gene of Estrogen Receptor  $\alpha$ .

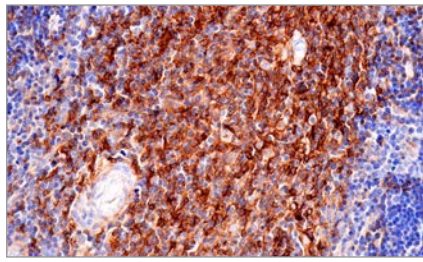


**IHC-P:** IHC analysis of paraffin-embedded human breast carcinoma using #52818.

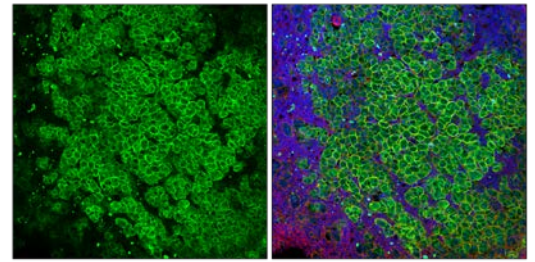




Mucolipin-1 (F8F9Q) Rabbit mAb #27748



HLA-B (BC43) Mouse mAb #41915



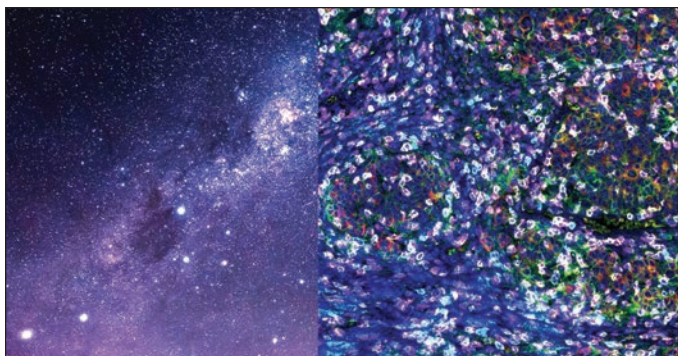
SCARB1 (E9H4F) Rabbit mAb #90332

PRODUCT		APPLICATIONS	REACTIVITY
<b>Adhesion/ECM</b>			
<b>34209SF</b>	CEACAM7 (E5Q6X) Rabbit mAb (BSA and Azide Free)	WB, IHC-P	H
<b>78328SF</b>	Claudin-5 (E5D9Y) Rabbit mAb (BSA and Azide Free)	WB, IHC-P	H, M
<b>52818S</b>	FAP (F1A4G) Rabbit mAb	WB, IP, IHC-P	H
<b>39070S</b>	LARG (E4I3L) Rabbit mAb	WB	H
<b>Apoptosis</b>			
<b>64436S</b>	Cleaved Gasdermin B (Lys229) (E1Y2E) Rabbit mAb	WB	H
<b>74771SF</b>	RIP3 (D4G2A) Rabbit mAb (BSA and Azide Free)	WB, IF-IC, FC-FP	M
<b>Autophagy</b>			
<b>27748S</b>	Mucolipin-1 (F8F9Q) Rabbit mAb	WB, IP, IF-IC	H
<b>52416S</b>	Rubicon (F1E8X) Rabbit mAb	WB, IP	H, M, R
<b>Cell Cycle / Checkpoint Control</b>			
<b>80628C</b>	FastScan™ PCNA ELISA Kit	ELISA	H, M, R, Mk
<b>Chromatin Regulation / Nuclear Function</b>			
<b>28299S</b>	ATF7IP (F8C9I) Rabbit mAb	WB, IP	H, Mk
<b>77552S</b>	CUT&Tag Assay Kit	C&T	-
<b>83054S</b>	p400 (E8R5S) Rabbit mAb	WB	H, Mk
<b>79606S</b>	PCGF3 (F3X9C) Rabbit mAb	WB	H, M, R, Mk
<b>Cytoskeletal Signaling</b>			
<b>85000S</b>	β-Actin (D6A8) Rabbit mAb (Alexa Fluor® 488 Conjugate)	IF-IC, FC-FP	H, M, R, Mk, Dm, Z, (Hm, C, B, Pg)
<b>37124SF</b>	RACK1 (D59D5) Rabbit mAb (BSA and Azide Free)	WB, IHC-P	H, M, R, Mk, Dm
<b>46788C</b>	PathScan® RP Phospho-Cofilin (Ser3) Sandwich ELISA Kit	ELISA	H, M
<b>Developmental Biology</b>			
<b>61670S</b>	GATA-2 (E9T6F) Rabbit mAb (Alexa Fluor® 488 Conjugate)	IF-IC, FC-FP	H, M, R
<b>38921S</b>	LEF1 (C12A5) Rabbit mAb (Alexa Fluor® 700 Conjugate)	FC-FP	H, M, R
<b>33056S</b>	b-Myb (F9W2M) Rabbit mAb	WB, IP, ChIP	H, M, R, Mk
<b>Immunology and Inflammation</b>			
<b>97116S</b>	APMAP (F1E6M) Rabbit mAb	WB	H, M, R
<b>43159SF</b>	CIQB (E3U6X) Rabbit mAb (BSA and Azide Free)	WB, IHC-LB, IHC-P	M
<b>72240S</b>	CD69 (F8N6A) Rabbit mAb	WB	M
<b>41915S</b>	HLA-B (BC43) Mouse mAb	IHC-P	H
<b>84318S</b>	IFNGR1 (E3I8B) Rabbit mAb	WB, IP	M
<b>59170S</b>	IL-18 (E3G8R) Rabbit mAb (Alexa Fluor® 647 Conjugate)	FC-FP	H
<b>93121SF</b>	LYVE-1 (E5P8S) Rabbit mAb (BSA and Azide Free)	WB, IHC-P	M
<b>74986S</b>	Mm47 (F4E5V) Rabbit mAb	WB, IP, IF-F, IF-IC, FC-FP	H, M, R, Mk
<b>95735S</b>	PIP4K2C (E7P3S) Rabbit mAb (PE Conjugate)	FC-FP	H, M, R
<b>88134S</b>	c-Rel (E8Z5Y) XP® Rabbit mAb (Alexa Fluor® 488 Conjugate)	IF-IC, FC-FP	H
<b>51044S</b>	Phospho-Stat6 (Tyr641) (D8S9Y) Rabbit mAb (Alexa Fluor® 488 Conjugate)	FC-FP	H, M, (R)

PRODUCT		APPLICATIONS	REACTIVITY
<b>MAP Kinase Signaling</b>			
<b>14188S</b>	c-Fos (9F6) Rabbit mAb (Alexa Fluor® 647 Conjugate)	FC-FP	H, M, R, (Hm, B, Pg)
<b>17148SF</b>	JunB (C37F9) Rabbit mAb (BSA and Azide Free)	WB, IHC-P, IF-ICww	H, M, R, Mk
<b>36342S</b>	RASA2 (F2O1I) Rabbit mAb	WB	H, M, R, (B, Pg)
<b>Metabolism</b>			
<b>75375S</b>	MIGA2/FAM73B (E3D7E) Rabbit mAb	WB	H, M
<b>82073S</b>	NADK2 (F5X1V) Rabbit mAb	WB, IP	H, R
<b>90332S</b>	SCARB1 (E9H4F) Rabbit mAb	WB, IP, IHC-P, IF-F	H, M
<b>67776S</b>	SIK1 (F5D8F) Rabbit mAb	WB, IP	H, M, R
<b>33871S</b>	SLC25A39 (F2F6O) Rabbit mAb	WB	H
<b>26087S</b>	SSBP1 (F4E9N) Rabbit mAb	WB	H, Mk
<b>81327SF</b>	Thymidylate Synthase (D5B3) XP® Rabbit mAb (BSA and Azide Free)	WB, IHC-P, IF-IC, FC-FP	H, M, R, Mk
<b>34088S</b>	TPI1 (F6U6Y) Rabbit mAb	WB	H, M, R
<b>Neuroscience</b>			
<b>80817S</b>	MS4A7 (E3E1A) Rabbit mAb	WB	H
<b>59051SF</b>	p75NTR (E7I3M) Rabbit mAb (BSA and Azide Free)	WB, IHC-P	H, M, R
<b>48475S</b>	PILRA (E7K1H) Rabbit mAb	WB	H
<b>52656S</b>	SNAP25 (F5Z2D) Rabbit mAb	WB, IP, IF-F, IF-IC	H, M, R
<b>20223S</b>	SNAP25 (F1A9G) Mouse mAb	WB, IF-F, IF-IC	H, M, R
<b>62193S</b>	SynGAP (E7J9K) Mouse mAb	WB	H, M, R
<b>54926S</b>	Tau (E8B5J) Mouse mAb	WB	H, M, R
<b>42413S</b>	Phospho-Tau (Thr111) Antibody	WB	H, M, R
<b>PI3K / Akt Signaling</b>			
<b>64426S</b>	Phospho-Akt (Ser473) Matched Antibody Pair	ELISA	H, M, R, Mk
<b>93804S</b>	Gab1 (E8U1S) Rabbit mAb	WB, IP, IF-IC	H
<b>Protein Folding and Trafficking</b>			
<b>32979S</b>	API51 (F8K5S) Rabbit mAb	WB, IP	H, M, R
<b>RTK</b>			
<b>99209SF</b>	Axl (E3Z2H) Rabbit mAb (BSA and Azide Free)	WB, IHC-P	H, M, R
<b>63440C</b>	PathScan® RP Total FGF Receptor 2 Sandwich ELISA Kit	ELISA	H, M
<b>Translational Control</b>			
<b>38573SF</b>	Phospho-S6 Ribosomal Protein (Ser235/236) (91B2) Rabbit mAb (BSA and Azide Free)	WB, IF-IC	H, M, R
<b>36423C</b>	PathScan® RP Total TFEB Sandwich ELISA Kit	ELISA	H
<b>Ubiquitin and Ubiquitin-like proteins</b>			
<b>53229S</b>	USP18 (E9K4X) Rabbit mAb	WB, IP, IF-IC	M
<b>Related Products</b>			
<b>35401S</b>	Goat Anti-Rabbit IgG (H+L) Antibody	C&T	Rab
<b>71323S</b>	DYKDDDDK Tag (D6W5B) Rabbit mAb (Binds to same epitope as Sigma-Aldrich Anti-FLAG M2 antibody) (mFluor™ Red 780 Conjugate)	FC-FP	All
<b>68860L</b>	Normal Mouse IgG	C&T	-
<b>63975C</b>	PathScan® RP CasMINI Sandwich ELISA Kit	ELISA	All



# What's New at CST



## SignalStar™ Multiplex IHC for Spatial Biology

**Unlocking Spatial Insights:** Accelerate Discoveries up to 70% Faster with SignalStar™ Multiplex IHC

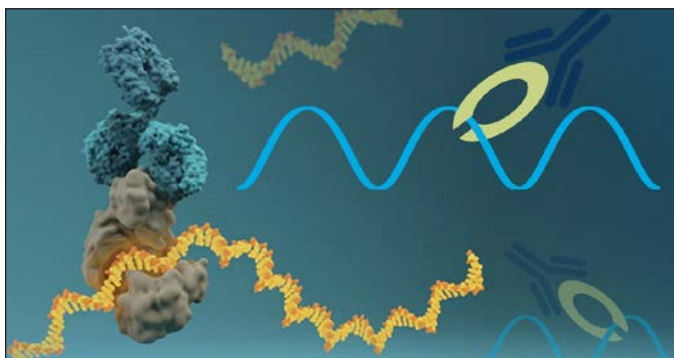
[cst-science.com/Q1-2024-info1](https://cst-science.com/Q1-2024-info1)



## Adapt Matched Antibody Pairs to Your Immunoassay Platforms

**Explore the entire CST catalog** to find Matched Antibody Pairs for your next assay. Take the guesswork out of screening for the perfect pair. CST scientists have validated antibody pairs for you, and can help you customize them to your project needs.

[cst-science.com/Q1-2024-info2](https://cst-science.com/Q1-2024-info2)



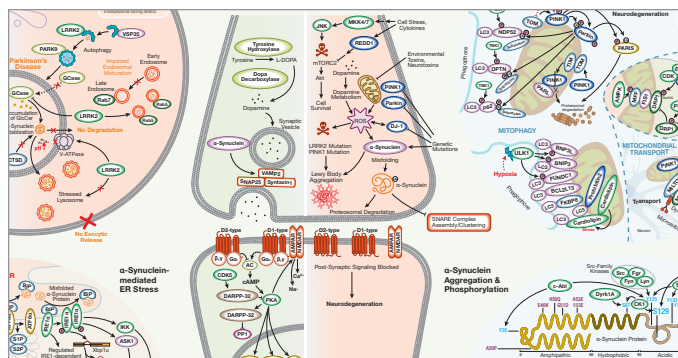
## Validated Antibodies for eCLIP

**Save time and be confident that your eCLIP antibodies generate high-quality results you can trust.** CST has partnered with Dr. Gene Yeo's lab at UCSD and Eclipsebio to bring you RNA-binding protein (RBP) antibodies that are rigorously tested and validated for RBP-eCLIP experiments. Explore our growing list of eCLIP-validated antibodies, with more to come!

[cst-science.com/Q1-2024-info3](https://cst-science.com/Q1-2024-info3)

**For Research Use Only. Not for Use in Diagnostic Procedures.**

© 2024 Cell Signaling Technology, Inc. CST, Cell Signaling Technology, and XP are registered trademarks of Cell Signaling Technology, Inc. All other trademarks are the property of their respective owners. Visit [cellsignal.com/trademarks](https://cellsignal.com/trademarks) for more information. 24-PRG-41999-EN



## Interactive Signaling Pathways

**Explore interactive signaling pathways.** Click a node or protein in the pathway to learn more about the target at PhosphoSitePlus®, a CST-developed database of post-translational modifications. Or visit the page for the corresponding antibody product.

[cst-science.com/Q1-2024-info4](https://cst-science.com/Q1-2024-info4)

[cellsignal.com/newproducts](https://cellsignal.com/newproducts)



**Cell Signaling**  
TECHNOLOGY®